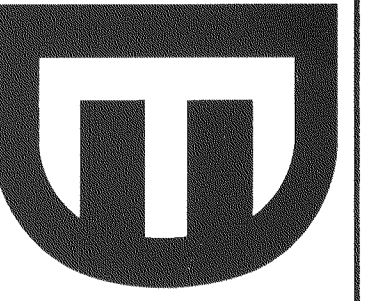


D&M Engineering
 DURAN THOMPSON, P.E.
 1020 EAST GILBERT DRIVE, SUITE D
 TEMPE, AZ 85281
 PH: (480) 350-9590
 FAX: (480) 350-9486
 E-MAIL: engineer@dmengineer.com



MISSION HEIGHTS
 8655 EAST DESERT LANE
 MESA, ARIZONA

FINAL PLAT

NO.	DATE	APP.	DESCRIPTION

DESIGNED DTT
 DRAWN AGY
 CHECKED DTT
 DATE 09-11-14
 SCALE 1"=40'
 PROJECT 130803
 FILE NAME Final Plat

SHEET 2 OF 2

LOT	AREA (S.F.)	AREA (AC.)
LOT 1	4,519 sq.ft.	0.104 acres
LOT 2	4,702 sq.ft.	0.108 acres
LOT 3	4,518 sq.ft.	0.104 acres
LOT 4	4,460 sq.ft.	0.102 acres
LOT 5	4,492 sq.ft.	0.103 acres
LOT 6	4,568 sq.ft.	0.105 acres
LOT 7	4,692 sq.ft.	0.108 acres
LOT 8	4,623 sq.ft.	0.106 acres
LOT 9	4,716 sq.ft.	0.108 acres
LOT 10	4,651 sq.ft.	0.107 acres
LOT 11	4,680 sq.ft.	0.107 acres
LOT 12	4,675 sq.ft.	0.107 acres
LOT 13	4,658 sq.ft.	0.107 acres
LOT 14	4,878 sq.ft.	0.112 acres
LOT 15	4,985 sq.ft.	0.114 acres
LOT 16	4,777 sq.ft.	0.110 acres
LOT 17	4,749 sq.ft.	0.109 acres
LOT 18	4,500 sq.ft.	0.103 acres
LOT 19	4,500 sq.ft.	0.103 acres
LOT 20	4,500 sq.ft.	0.103 acres
LOT 21	4,500 sq.ft.	0.103 acres
LOT 22	4,710 sq.ft.	0.108 acres
LOT 23	4,506 sq.ft.	0.103 acres
LOT 24	4,506 sq.ft.	0.103 acres
LOT 25	4,506 sq.ft.	0.103 acres
LOT 26	4,506 sq.ft.	0.103 acres
LOT 27	4,719 sq.ft.	0.108 acres
LOT 28	4,722 sq.ft.	0.108 acres
LOT 29	4,724 sq.ft.	0.108 acres
LOT 30	4,692 sq.ft.	0.108 acres
LOT 31	4,974 sq.ft.	0.114 acres
LOT 32	4,500 sq.ft.	0.103 acres
LOT 33	4,500 sq.ft.	0.103 acres
LOT 34	4,500 sq.ft.	0.103 acres
LOT 35	4,500 sq.ft.	0.103 acres
LOT 36	4,500 sq.ft.	0.103 acres
LOT 37	4,500 sq.ft.	0.103 acres
LOT 38	4,500 sq.ft.	0.103 acres
LOT 39	4,500 sq.ft.	0.103 acres
LOT 40	4,500 sq.ft.	0.103 acres
LOT 41	4,500 sq.ft.	0.103 acres
LOT 42	5,233 sq.ft.	0.120 acres
LOT 43	5,783 sq.ft.	0.133 acres

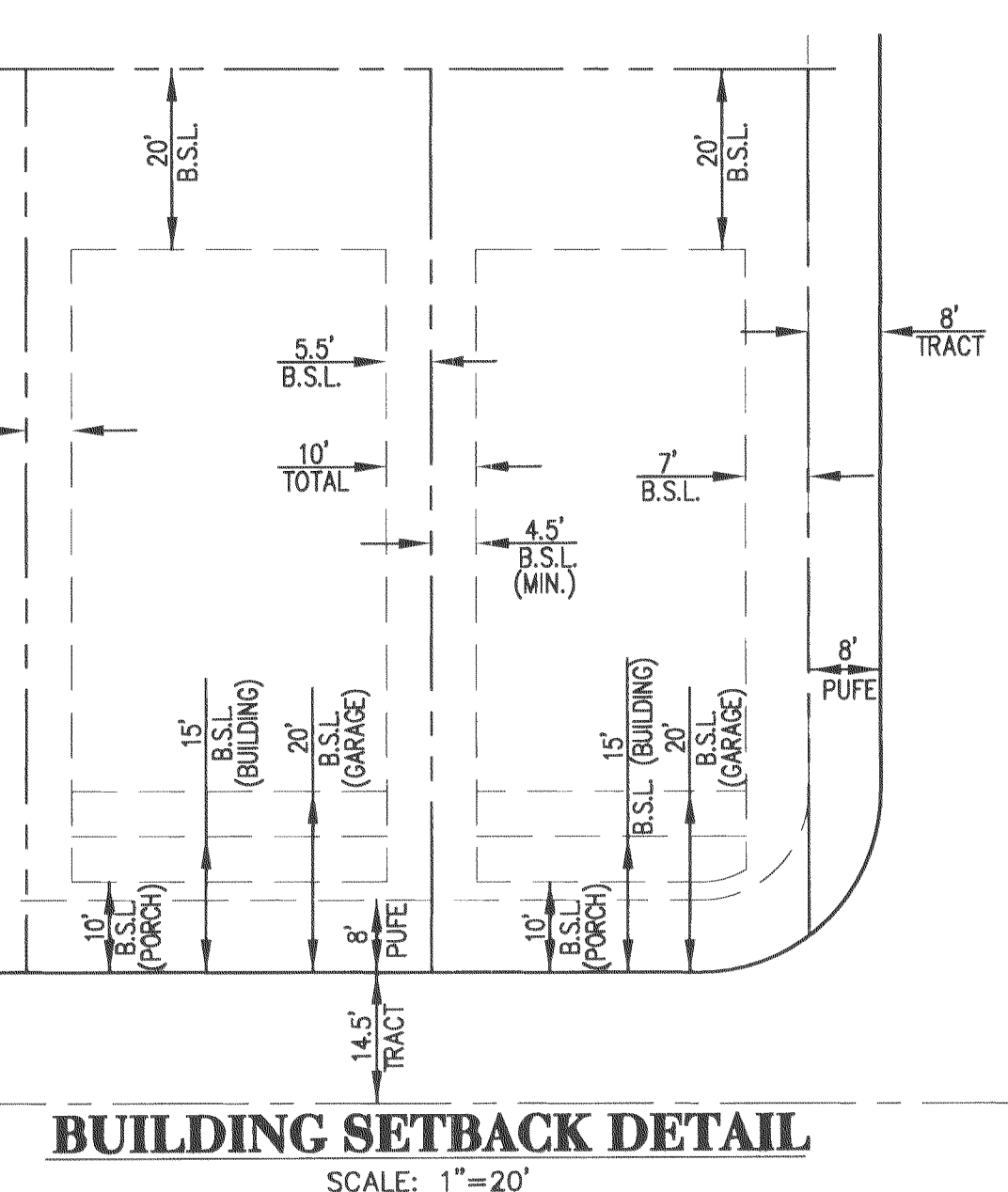
CURVE	LENGTH	RADIUS	DELTA	TANGENT
C1	19.27'	22.50'	49°03'45"	10.27'
C2	37.04'	50.00'	42°26'28"	19.41'
C3	84.32'	50.00'	96°37'17"	56.14'
C4	121.35'	50.00'	139°03'45"	133.95'
C5	65.15'	150.00'	24°53'10"	33.10'
C6	61.39'	164.50'	21°22'52"	31.05'
C7	30.34'	135.50'	12°49'47"	15.23'
C8	27.62'	135.50'	11°40'40"	13.86'
C9	2.72'	135.50'	1°09'07"	1.36'
C10	33.18'	20.00'	95°03'48"	21.85'
C11	14.64'	20.00'	41°56'00"	7.66'
C12	18.55'	20.00'	53°07'48"	10.00'
C13	29.88'	20.00'	85°35'30"	18.52'
C14	11.33'	20.00'	32°27'41"	5.82'
C15	18.55'	20.00'	53°07'48"	10.00'
C16	167.61'	485.50'	19°46'49"	84.65'
C17	210.22'	500.00'	24°05'21"	106.68'
C18	183.50'	514.50'	20°26'07"	92.74'
C19	43.64'	485.50'	5°09'00"	21.83'
C20	51.88'	485.50'	6°07'22"	25.97'
C21	52.47'	485.50'	6°11'32"	26.26'
C22	19.62'	485.50'	2°18'55"	9.81'
C23	43.58'	49.00'	50°57'49"	23.35'
C24	33.38'	49.00'	39°02'11"	17.37'
C25	76.97'	49.00'	90°00'00"	49.00'
C26	54.19'	34.50'	90°00'00"	34.50'
C27	31.42'	20.00'	90°00'00"	20.00'
C28	24.83'	514.50'	2°45'54"	12.42'
C29	42.49'	514.50'	4°43'56"	21.26'
C30	42.49'	514.50'	4°43'56"	21.26'
C31	42.30'	514.50'	4°42'40"	21.16'
C32	31.38'	514.50'	3°29'41"	15.70'
C33	54.19'	34.50'	90°00'00"	34.50'
C34	31.42'	20.00'	90°00'00"	20.00'
C35	76.97'	49.00'	90°00'00"	49.00'
C36	27.77'	20.00'	79°33'40"	16.65'
C37	3.64'	20.00'	10°26'20"	1.83'
C38	33.86'	49.00'	39°35'49"	17.64'
C39	43.11'	49.00'	50°24'11"	23.06'
C40	185.02'	400.00'	26°30'10"	94.20'
C41	142.97'	385.50'	21°14'55"	72.31'
C42	157.85'	414.50'	21°49'12"	79.90'
C43	42.64'	385.50'	6°20'14"	21.34'
C44	54.71'	385.50'	8°07'55"	27.40'
C45	45.61'	385.50'	6°46'46"	22.83'
C46	32.67'	20.00'	93°35'42"	21.30'
C47	14.12'	20.00'	40°27'54"	7.37'
C48	18.55'	20.00'	53°07'48"	10.00'
C49	41.94'	414.50'	5°47'48"	20.99'
C50	41.97'	414.50'	5°48'03"	21.00'
C51	41.97'	414.50'	5°48'04"	21.00'
C52	31.33'	414.50'	4°19'52"	15.67'
C53	30.36'	20.00'	86°58'35"	18.97'
C54	11.81'	20.00'	33°50'46"	6.09'
C55	18.55'	20.00'	53°07'49"	10.00'
C56	0.65'	414.50'	0°05'25"	0.33'
C57	65.04'	150.00'	24°50'37"	33.04'
C58	58.75'	135.50'	24°50'37"	29.85'
C59	30.14'	50.00'	34°32'37"	15.55'
C60	16.77'	50.00'	19°12'55"	8.46'
C61	25.56'	50.00'	29°17'24"	13.07'
C62	26.80'	174.50'	8°48'02"	13.43'
C63	73.04'	172.50'	24°15'34"	37.07'
C64	52.34'	127.50'	23°31'12"	26.54'
C65	4.58'	50.00'	5°15'14"	2.29'
C66	2.05'	164.50'	0°42'53"	1.03'
C67	34.44'	25.00'	78°55'58"	20.58'

LINE	LENGTH	BEARING
L1	16.86'	S45°14'15"E
L2	11.65'	S45°14'15"E
L3	16.00'	N00°09'39"E
L4	28.26'	N45°13'10"E
L5	28.26'	N44°53'52"W
L6	16.00'	S00°09'39"W
L7	4.33'	N00°09'39"E
L8	11.67'	N00°09'39"E
L9	5.12'	S89°47'48"E
L10	5.96'	S24°40'58"E

OFFICIAL RECORDS OF
 MARICOPA COUNTY RECORDER
 HELEN PURCELL
 20140614877 09/17/2014 01:33
 BOOK 1201 PAGE 17
 PAPER RECORDING

20140727008-1
 Hoyp

TRACT	AREA (S.F.)	AREA (AC.)	USE
TRACT "A"	9,581 sq.ft.	0.220 acres	RETENTION, LANDSCAPING AND OPEN SPACE, PUBLIC UTILITIES AND PUBLIC DRAINAGE EASEMENT
TRACT "B"	731 sq.ft.	0.017 acres	LANDSCAPING AND OPEN SPACE AND PUBLIC UTILITIES
TRACT "C"	1,204 sq.ft.	0.028 acres	LANDSCAPING AND OPEN SPACE AND PUBLIC UTILITIES
TRACT "D"	22,865 sq.ft.	0.525 acres	RETENTION, LANDSCAPING AND OPEN SPACE AND PUBLIC UTILITIES
TRACT "E"	3,350 sq.ft.	0.077 acres	RETENTION, LANDSCAPING AND OPEN SPACE, PUBLIC UTILITIES AND PUBLIC DRAINAGE EASEMENT
TRACT "F"	4,625 sq.ft.	0.106 acres	RETENTION, LANDSCAPING AND OPEN SPACE, PUBLIC UTILITIES AND PUBLIC DRAINAGE EASEMENT
TRACT "G"	46,539 sq.ft.	1.068 acres	PRIVATE STREETS, PUBLIC UTILITY EASEMENT AND UNDERGROUND STORM DRAIN PIPES

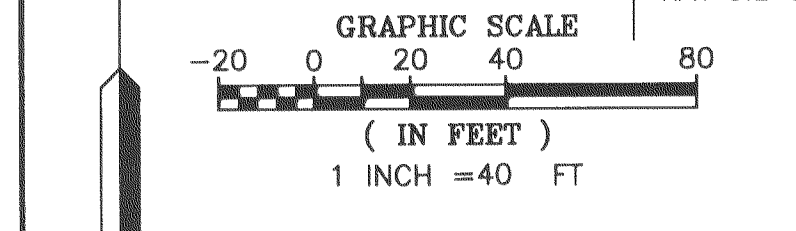
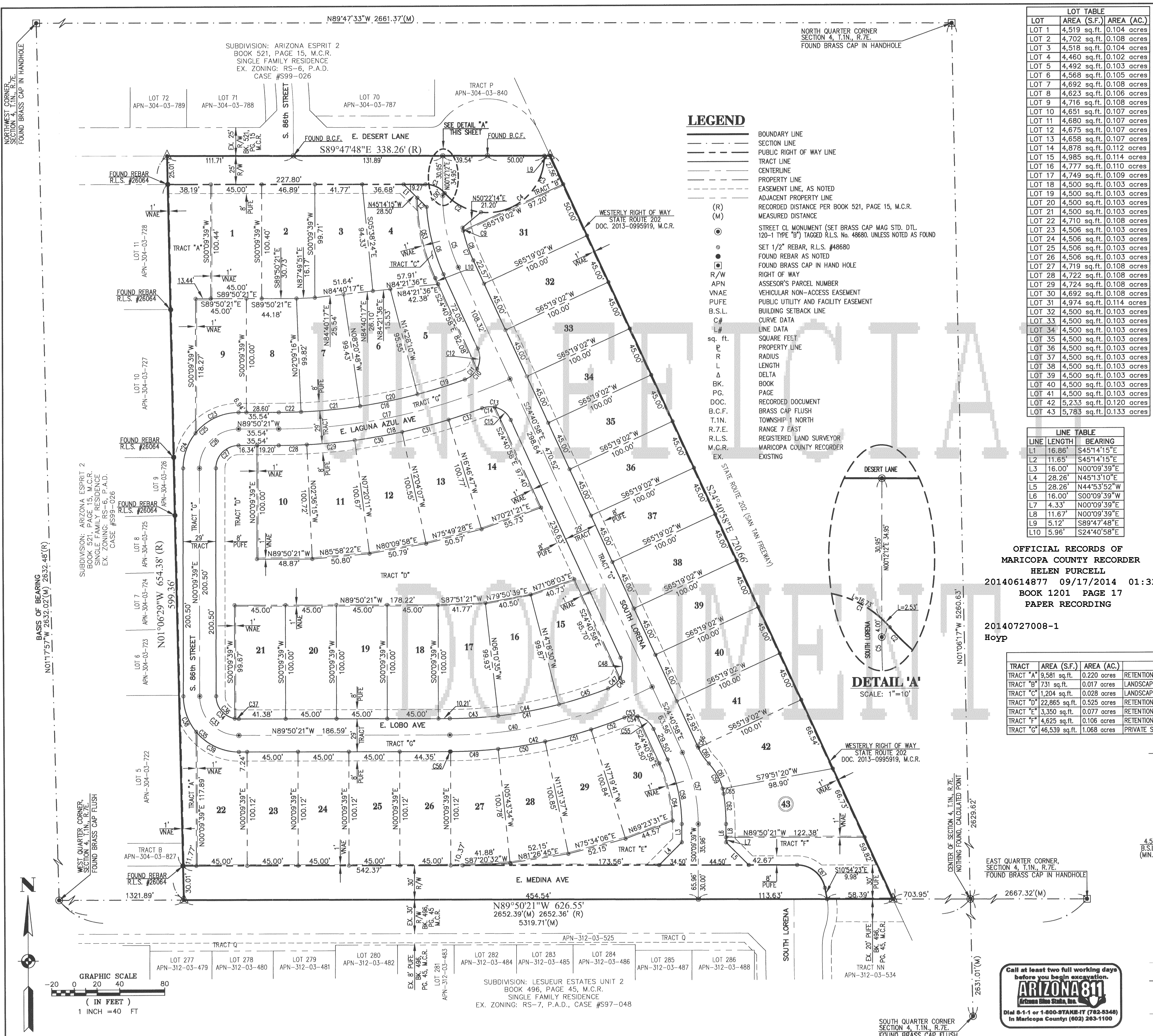
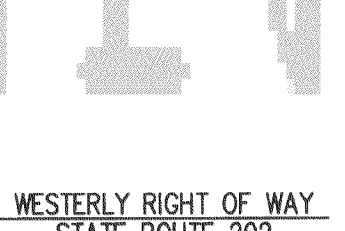


Call at least two full working days before you begin excavation.
ARIZONA 811
 Arizona One-Stop, Inc.
 Dial 8-1-1 or 1-800-STATE-IT (782-8348)
 in Maricopa County (602) 263-1100

LEGEND

- BOUNDARY LINE
- - - SECTION LINE
- PUBLIC RIGHT OF WAY LINE
- - - TRACT LINE
- - - CENTERLINE
- - - PROPERTY LINE
- - - EASEMENT LINE, AS NOTED
- - - ADJACENT PROPERTY LINE
- - - RECORDED DISTANCE PER BOOK 521, PAGE 15, M.C.R. MEASURED DISTANCE
- (R) STREET CL. MONUMENT (SET BRASS CAP MAG. STD. DTL. 120-1 TYPE "B") TAGGED R.L.S. No. 48680, UNLESS NOTED AS FOUND
- (M) SET 1/2" REBAR, R.L.S. #48680
- FOUND REBAR AS NOTED
- FOUND BRASS CAP IN HAND HOLE
- RIGHT OF WAY
- APN
- VNAE
- P.U.F.E.
- B.S.L.
- C#
- L#
- sq. ft.
- R
- L
- Δ
- BK.
- P.G.
- DOC.
- B.C.F.
- T.I.N.
- R.Z.E.
- R.A.N.
- R.L.S.
- M.C.R.
- EX.

DETAIL 'A'
 SCALE: 1"=10'



SUBDIVISION: LESUEUR ESTATES UNIT 2
 BOOK 496, PAGE 45, M.C.R.
 SINGLE FAMILY RESIDENCE
 EX. ZONING: RS-7, P.A.D., CASE #S97-048

N89°47'33"W 2661.37'(M)
 NORTH QUARTER CORNER SECTION 4, T.1N., R.7E. FOUND BRASS CAP IN HANDHOLE

SUBDIVISION: ARIZONA ESPRIT 2
 BOOK 521, PAGE 15, M.C.R.
 SINGLE FAMILY RESIDENCE
 EX. ZONING: RS-6, P.A.D. CASE #S99-026

N01°17'57"W 2632.48'(R)
 BASIS OF BEARING
 N01°06'29"W 654.38'(R)

N89°50'21"W 626.55'
 2652.39'(M) 2652.36'(R)
 5319.71'(M)

N89°50'21"W 186.59'

N89°50'21"W 178.22'

N89°50'21"W 172.22'

N89°50'21"W 178.22'

N89°50'21"W 178.22'